

OUTREACH

MINISTRY GUIDE



TABLE OF CONTENTS

Ministry	Contact	Page
Dorothy Day /Loaves & Fishes	Cheryl Larson	4
Doulos Discovery Center	Gary Schroeher	5
Habitat for Humanity	Jim Ramberg	6
Holiday Fair	Linda Adams	7
Lynglomsten	Lynn Amon	8
Senior Care	Pastor Candee Moser	9
Open Hands Midway	Kay Kuehn	10
Various Food Rescues		11
Panera Bread Rescue Sat. Team	Jim and Angel Rieck	12
Reading Buddies	Gene Ruehle	12
Free Farmers Markets	Jane Schroeher Mark Gruner	13
God's Work, Our Hands Sunday	Brian Adams	14
Relay for Life	Jesse Anibas	15
Redeemer Quilters	Darlene Sigstad	16
Solid Ground (Tutoring, Giving Tree)	Brian Adams, Mike Lundberg	17
White Bear Area Emergency Food Shelf	Gary Eddy	18
Lake Area Discovery Center– Outreach Ministry Events	Tonya Sisterman	19



OUR MISSION

The Outreach Ministries of Redeemer Lutheran Church are focused on reaching out to our community—locally, nationally, and globally—with the love of Christ.

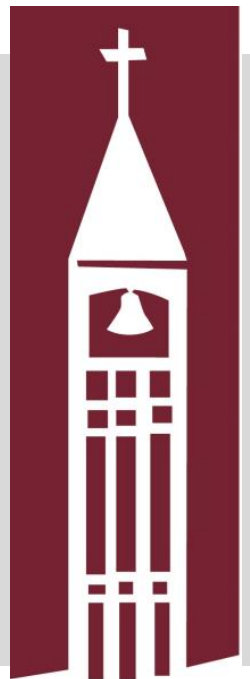
Covid-19 has an impact on all ministries. Please be thoughtful about safety and open to new ways of ministry during this difficult time.

We each have the opportunity to experience the meaning of caring, sharing and serving by participating in one or more of the outreach ministries at Redeemer. Simply contact the lead person listed for any outreach activity and that person will assist you in learning more about or getting involved in that ministry. All members of the community are welcome to participate in outreach activities. Please feel free to invite friends!

Thank you to each of you for all you do and will do! We all share in the blessings given!!

EACH OF YOU SHOULD USE
WHATEVER GIFT YOU HAVE
RECEIVED TO SERVE
OTHERS, AS FAITHFUL
STEWARDS OF GOD'S GRACE
IN ITS VARIOUS FORMS.

1 Peter 4:10





DOROTHY DAY CENTER/ LOAVES & FISHES

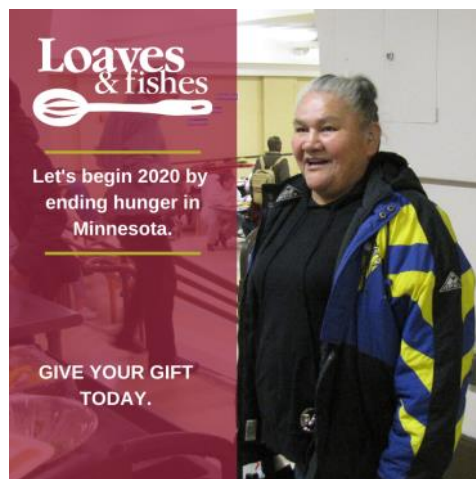
CONTACT

Cheryl Larson
612.812.9058
Don Myers
651.770.8746

TIME FRAME

Fourth Wednesday
every other month.
4:00-6:00 PM

The Dorothy Day Center provides hot meals served by volunteers, mental health services and medical care and much more to people experiencing homelessness. The Dorothy Day Center is supported financially by Loaves & Fishes organization. Redeemer has been serving at Dorothy Day by helping with their meal program, our longest running outreach ministry project. Volunteers from Redeemer serve on the 4th Wednesday of every other month, starting in January, for a total of six service opportunities each year. Approximately 20 volunteer servers and dishwashers serve 225-275 people each night. Redeemer also pays for the meals that we serve for a cost of approximately \$600 per night. This results in about 1,500 people served each year at a cost of \$2.40 per meal!!!! Volunteers are welcome.



DOULOS DISCOVERY SCHOOL— Jarabacoa, D.R.

CONTACT

Gary Schrocher
651.770.9543

The mission of the Doulos Discovery School is to equip and educate servant leaders through Christian discipleship, earning to impact the Dominican Republic. Because the school leadership and staff believe that all children have the capacity to lead if given the chance, half of the student body at the Doulos School are made up of students on need-based scholarships.

There are two ways to help the school to accomplish its mission:

- 1. by sponsoring an individual student;**
- 2. by sponsoring a class.**

Sponsoring a student will help pay for the student's tuition—a rate that most Dominican families can not afford. As a Sponsor, you will also make a personal connection with the student by sending and receiving letters, photos and by praying for the student. If you sponsor a whole class, your donation will help provide books, classroom essentials, and lower registration fees. As a class sponsor, you will have the opportunity to make personal connections with the teachers and class members.

Redeemer Members have made regular mission trips to Doulos. These trips provide opportunities to participate in work projects and to learning about the challenges that families and students face, as well as life and culture in the Dominican Republic.





HABITAT FOR HUMANITY

CONTACT

Jim Ramberg
651.440.0484

Habitat for Humanity believes that every man, woman and child should have a decent, safe and affordable place to live. They build and repair houses all over the world using volunteer labor and donations. Their partner families purchase these houses through no-profit, no-interest mortgage loans or innovative financing methods. As a nonprofit, ecumenical Christian ministry that builds with people in need regardless of race or religion, Habitat for Humanity welcomes volunteers and supporters from all backgrounds.

More than 1 million people each year volunteer to build with us under trained supervision.

We have an opportunity to partner with St. Andrews on Habitat for Humanity projects they are actively involved in. St. Andrews has a great web page that is directly linked to the Habitat site: www.saintandrews.org/habitat.

Please go directly to the web site to sign up or call for info.



HOLIDAY FAIR

CONTACT

Linda Adams
651.323.8543
LJA3466@gmail.com

TIME FRAME

First Saturday in
November

The Holiday Fair has been an annual event at Redeemer since 1971. People travel from great distances to attend this event, which provides an opportunity to purchase handmade crafts, baked foods, lefse, goodies from the Scandinavian Coffee shop, and a chance to bid for various items at the silent auction.

The money raised from the Holiday Fair is split—half of the money stays with Redeemer, for needs within our church ministries; the remaining half is used for outreach to support organizations in our community, including Solid Ground, Lutheran Social Services, White Bear Area Emergency Food Shelf, Relay for Life, Loaves & Fishes, as well as approximately 30 college kids who receive care packages to share God's love via goodies to roommates!

It's quite amazing to think that through gifts of baked goods, crafts and auction items donated by volunteers that we can multiply and share the good from it. You can help with the work of the Holiday Fair by donating crafts or silent auction items or by volunteering your time. Join the tradition!





LYNGBLOMSTEN

CONTACT

2ND HALF WITH LYNGBLOMSTEN

Lynn Amon

651.429.5411, ext. 15

Cell: 651.301.9445

lamon@lyngblomsten.org

Lyngblomsten is a Christian nonprofit organization serving older adults and their families through healthcare, housing, and community services. A continuum of healthcare and housing options include: market-rate and low income independent apartments with assisted living services available; short-term transitional care, long-term skilled nursing care; and specialized care for Alzheimer's disease and other dementias, Parkinson's disease, and palliative care.

Community services are accessed through life enrichment centers called **2nd Half with Lyngblomsten**, supporting adults over 50 to age well in their communities. The centers offer a variety of opportunities and resources, including in areas of socialization, education and the arts, health and wellness, spirituality, caregiver support, and volunteerism. Redeemer has been a host site for **2nd Half with Lyngblomsten** since 2016.

SHARE YOUR TIME AND
TALENTS AS A VOLUNTEER.



**2nd Half with
Lyngblomsten**

A Center for Enriching Lives after 50

Lyngblomsten serves through opportunities that fit your talents, interests, and schedule. One-time and ongoing volunteer opportunities are available for families, individuals, and groups of all ages, including: serving on a board or committee, administrative support, helping with a special event, visiting with residents as a Special Friend, providing pet visits, or exercising your creativity through arts and music activities.

Join a group of volunteers in White Bear Lake "Gathering" sites providing a break to caregivers of people living with memory loss. Volunteers offer fun activities and fellowship opportunities to those experiencing early mid-stage memory loss. Youth volunteer opportunities include a summer and school year program, as well as a scholarship program.



SENIOR CARE

CONTACT

Pastor Candee Moser

651.429.5411, ext. 12

cmoser@rlc-wbl.org

Members from Redeemer are also committed to helping provide care for seniors not only for members of our own faith community, but also for seniors in our community at large. Our pastors provide worship services to residents of Cerenity Care Center and The Waters Senior Care Center. There are also opportunities to serve seniors at Lyngblomsten and other care centers in the area.

Cerenity
SENIOR CARE

THE WATERS



OPEN HANDS MIDWAY

CONTACT

Kay Kuehn
651.646.6549 x12

Open Hands Midway, Inc. began as an outreach ministry of Bethlehem Lutheran Church in 1997. In 2009 the organization became separate official 501(c)(3) nonprofit. Because of their unique location near the corner of the busy intersection of University and Snelling Avenues in St. Paul, they have a wonderful opportunity to share resources that have been donated and to engage the Hamline-Midway neighborhood, and beyond, to meet the needs of those who are economically challenged or homeless.

Three service opportunities at Open Hands Midway:

1. CLOTHING COLLECTION

Redeemer collects clothing donations for distribution through the Open Hands Midway organization. There is a tub for clothing donations located in front of our Welcome Center desk. New or gently used clothing may be deposited in the tub—coats and other winter items are particularly needed during the colder months. Items are then delivered by clothing supervisors. Please visit the Open Hands website



2. FOOD RESCUE

Panera Vadnais Heights Food Rescue

Meet Thursday night to gather the day-end breads, bagels and sweets from the Vadnais Heights Panera on County Road E at 9:00/10:00 PM. Delivery to Open Hands Midway Saturday at 2:30 PM. Approx. 1 hour.

Contact Jesse Anibas 651.773.9629
jcanibas@msn.com



Kowalski's on Grand Avenue Food Rescue

Pick up 9:15 AM Tuesday and Thursdays, drop off at Open Hands Midway. Approx. 1.5-2 hours.

Contact Dick Kuehn 651.748.5744

Leann Chin Stillwater Food Rescue

Every other Friday 9:30 AM, drop off at Open Hands Midway. Approx. 1.25-1.5 hours. Contact Dick Kuehn 651.748.5744

3. MONDAY MEALS

The Open Hands Midway organization serves a free community meal every Monday. Volunteers help prepare meals (9:30 am—12:00pm) and serve the meals (12:00—2:30pm). 5 hours each Monday/month.

Contact Dick Kuehn 651.748.5744



PANERA BREAD RESCUE – SATURDAY TEAM

CONTACT
Jim / Angel Rieck
651.428.1248

TIME FRAME
Saturdays, 6:30 AM
angelrieck@comcast.net
jimrieck@comcast.net

The Panera Bread Ministry was started in an effort to feed people and save bread that might otherwise go to waste. Every Saturday morning, one of the four bread ministry teams from Redeemer gathers day-old bread, bagels & sweets from Panera on White Bear Avenue.

The bread items are sorted, bagged and separated before distributed to those in need of food, including residents of senior housing.



READING BUDDIES

CONTACT
Gene Ruehle
651.429.0022
ecsmruehle@icloud

TIME FRAME
30 minutes/ week
during school year

The Reading Buddies Program was originated by members of Redeemer. Volunteers are paired with public school students needing extra reading support. The program began at Willow Lane Elementary School in 2010 with approx. 20 mentors from Redeemer. The program has grown to include mentors from three churches and the community at large.



Volunteers pick a 30 minute time block each week. Students bring their own reading materials to read aloud to the volunteer. The goal is to have each student grow in confidence through the practice of reading and by building relationships with their reading buddy.



FREE FARMERS' MARKETS

CONTACT
Jane Schroeder Mark Gruner
651.770.9543 612.393.4655

Free Farmers' Markets sponsored by Second Harvest and the Emergency White Bear Lake Area Food Shelf.

Mobile Markets provide free produce to anyone in the community. Other community partners will provide wellness checks, housing information, and other helpful information.



The events will take place on the 4th Thursday, July 23rd, August 27th and September 24th at the Senior Center, 2484 County Rd F, White Bear Lake.

2 Shifts: 11:00 AM-3:00 PM for set-up/food distribution and 12:00-4:00 PM for food distribution/take down.

Sign-up via

www.signupgenius.com/go/30e0c4a8ac2aa4fa7-free

Volunteers are asked to review and sign the FFM Volunteer Agreement via sign-up genius link to fulfill new volunteer requirements. Children and youth may volunteer with an accompanying parent.





GOD'S WORK - OUR HANDS SERVICE SUNDAY

CONTACT

Brian Adams 651.983.6868
beadams3466@comcast.net

A fun annual event the second Sunday of September provides a wide range of projects serving our neighbors and community.

Past projects have included: event for children at Solid Ground, Singing for Seniors, projects at the White Bear Emergency Food Shelf and Second Harvest, Feed My Starving Children, thank you letters to local teachers, Sandwich Project of MN and yardwork for those in need. If you have a creative idea for a new project please let us know!



RELAY FOR LIFE

CONTACT

Jesse Anibas
612.965.5030

The Redeemer Runners Relay for Life Team has been part of White Bear Lake Area Relay for Life for many years. The first event was held in 2004. It is always held on the last Friday in July, at the football field/track of South Campus / White Bear Lake Area High School.

This community event gives an opportunity to benefit people who have cancer and are undergoing treatment, their caregivers and family members, and cancer survivors. The team is made up of adults and youth.

It is an opportunity to work together in support of this cause.





REDEEMER QUILTERS

CONTACT

Darlene Sigstad
651.653.6445

darlene.sigstad@gmail.com

TIME FRAME

Wed. 9 AM-12 PM

This group of dedicated quilters meet once each week to prepare, tie quilts and share fellowship and friendship. Baby quilts, lap robes, and full-size bed quilts are made.

Items are given to Karin refugees, Lyngblomsten Care Center, Ramsey County Public Health Nurses, Tubman Family Alliance Shelter for Women, Solid Ground, Redeemer graduating high school seniors, and to those who are baptized at Redeemer.

The quilters also prepare quilting kits so members can make quilts at home. Funding for the quilting projects is provided through the annual Redeemer Holiday Fair.



SOLID GROUND

CONTACTS

Brian Adams 651.983.6868

beadams3466@comcast.net

Mike Lundberg 651.402.3744

mlundbergmn@gmail.com

Solid Ground is an award winning nonprofit organization whose proven, holistic approach helps families build the strong foundations needed to emerge from homelessness into a brighter future. Through safe, affordable housing and innovative supportive programming, Solid Ground helps families transition to a higher level of self-sufficiency and break the cycle of homelessness and poverty.

Solid Ground currently runs four programs in suburban Ramsey and Washington Counties, providing housing and support to approx. 300 women, men and children annually.

Service Opportunities & Special Events:

1. Solid Ground Tutoring: Tutoring helps a child succeed in school and develops a relationship with a positive adult role model. Solid Ground works closely with tutors to find a good fit and provide ongoing support for 2nd-6th graders. One day/week Mon-Thu from 4:15-5:15 PM.
2. Solid Ground Christmas Living Tree Project

Each November, Solid Ground staff provide a list of needs to gift to residents at Christmas. Needs are placed on tags and hung on a Christmas tree located in the Redeemer Atrium. Church members take a tag, fill the request and place it back under the tree. When all requests have been filled, they are delivered to Solid Ground.

**Solid
Ground**





WHITE BEAR AREA EMERGENCY FOOD SHELF

CONTACT

Gary Eddy 651.426.5264
garyeddy5264@comcast.net

The White Bear Area Emergency Food Shelf exists for those who live in the White Bear Lake Area School District who are experiencing an emergency or financial difficulty. The food shelf provides food including fresh produce, dairy products and meat.

The Food Shelf is supported by the generous donations of food and cash from individuals, businesses, schools, churches, associations and other community groups. In addition, more than 90 people volunteer their time to ensure that food is stocked and ready for distribution to families five days a week.

Redeemer sponsors regular food drives to raise donations for the food shelf including the annual



White Bear Area Emergency
Food Shelf



Lake Area Discovery Center at Redeemer

CONTACT

Tonya Sisterman, Site-Director
651.762.7884
office@ladcfamilies.org

Redeemer has partnered with Lake Area Discovery as a Partner in Ministry since 1999 to provide high-quality, Christian-based early-childhood programs and care for young families in the White Bear Lake and Redeemer Communities.

FREE Family Ministry Outreach Events are offered throughout the year as opportunities for fellowship, ministry and outreach open to all families in the community with young children. Examples of Partnership/Outreach Events include the Fall / Harvest Round-Up, the Winter / Ice Block Party and the Spring / Easter Egg Hunt.





**3770 Bellaire Ave
White Bear Lake MN
www.rlc-wbl.org 651.429.5411**